

the best regional partners



# Embedded Box PC Pluto E230

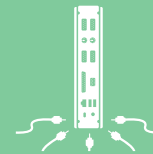
A lot of PC in a little package

MiTAC's Pluto E230 is built the latest generation of Intel's Apollo Lake. The whole new SOC structure packs more powerful capability for your tasks or applications.

The E230's 2.2 liter fan-less chassis design gives it the flexibility to adapt to every workspace and environment, whether implemented as an Embedded Box PC. VESA mount support allows for space-saving and rear-mounting on flat-screen displays. Flexibilities also mean a rich array of I/O ports (including 2 x PS/2, 4 x USB 3.0, 2 x Ethernet RJ45, 1 x VGA, 1 x HDMI, 2 x RS232, 1 x DC Jack, 1 x Kensington lock) to add a variety of peripherals. Storage expandability is supported for high-density hard drives. Two M.2 slots provide the support of SSD and wireless interfaces which allow effortless connection to Wi-Fi and Bluetooth networks. D-Sub and HDMI extend your visual experience with support for dual displays.



Fanless design



Versatile interfaces



VESA mounting



Wireless (Optional)



Dual Display

HDD:2.5"  
SSD:M.2 2280

support

# Embedded Box PC Pluto E230

A lot of PC in a little package



VESA mount support



Vertical and horizontal orientation



Fanless design



mSATA / HDD / SSD support



Wireless support (Option)



Dual LAN



Dual Display



Versatile interfaces

Item	Spec
Processor	Intel Apollo Lake, J3455 (2M Cache, up to 2.3 GHz Quad Core) Optional: N3350 (2M L2 Cache, up to 2.4 GHz Dual Core) N4200 (2M L2 Cache, up to 2.5 GHz Quad Core)
PCB	Proprietary, 6 layer, 182 x 185mm
Memory	Support for DDR3L 1866 MHz SO-DIMMs Support for up to 8GB of system memory 204-pin DDR3L SO-DIMM
LAN	Realtek RTL8111G GLAN x 2
Audio	Realtek ALC-662
Storage	SATA DOM or 2.5" SATA HDD / SSD or M.2
M.2	1 x 2280, 2260 & 2242 M.2 (with PCIe x 1 Channel, USB, & SATA III Signal) 1 x 2230 M.2 (with PCIe x 1 Channel & USB Signal)
Front I/O	2 x USB 3.0, MIC-in, Headphone-out, power button
Rear I/O	2 x PS/2, 1 x Parallel Port, 2 x USB 3.0, 2 x USB 2.0, 2 x Ethernet RJ45, 1 x VGA, 1 x HDMI, 2 x RS232, 1 x DC jack, 1 x Kensington lock
Environmental	Fan less System Temp: 10 Degree C~40 Degree C Humidity: 20%~85% Condensing MB Temp: 0~60 Degree C
VESA Mount	Support 75 x 75mm and 100 x 100mm standard (Option)
Stand	For vertical orientation use
Dimension	220 x 195 x 50mm (Fanless)
Weight	1kg
OS support	Windows 10 64bit, Linux (support by request)
BIOS	UEFI mode only (Not support Legacy mode)